

# Appendix A: Sample Club Committee Structure

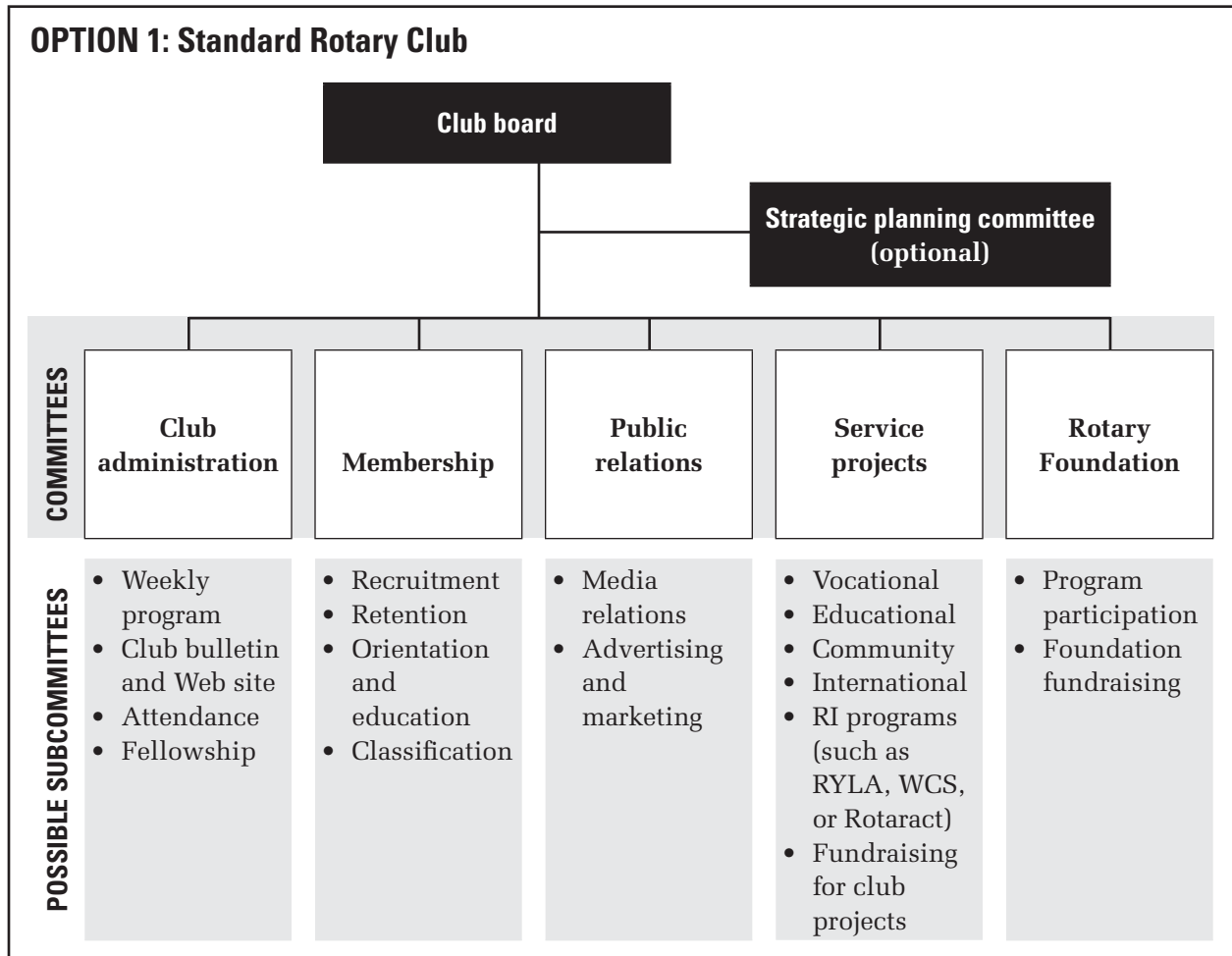


## Rotary Reminder

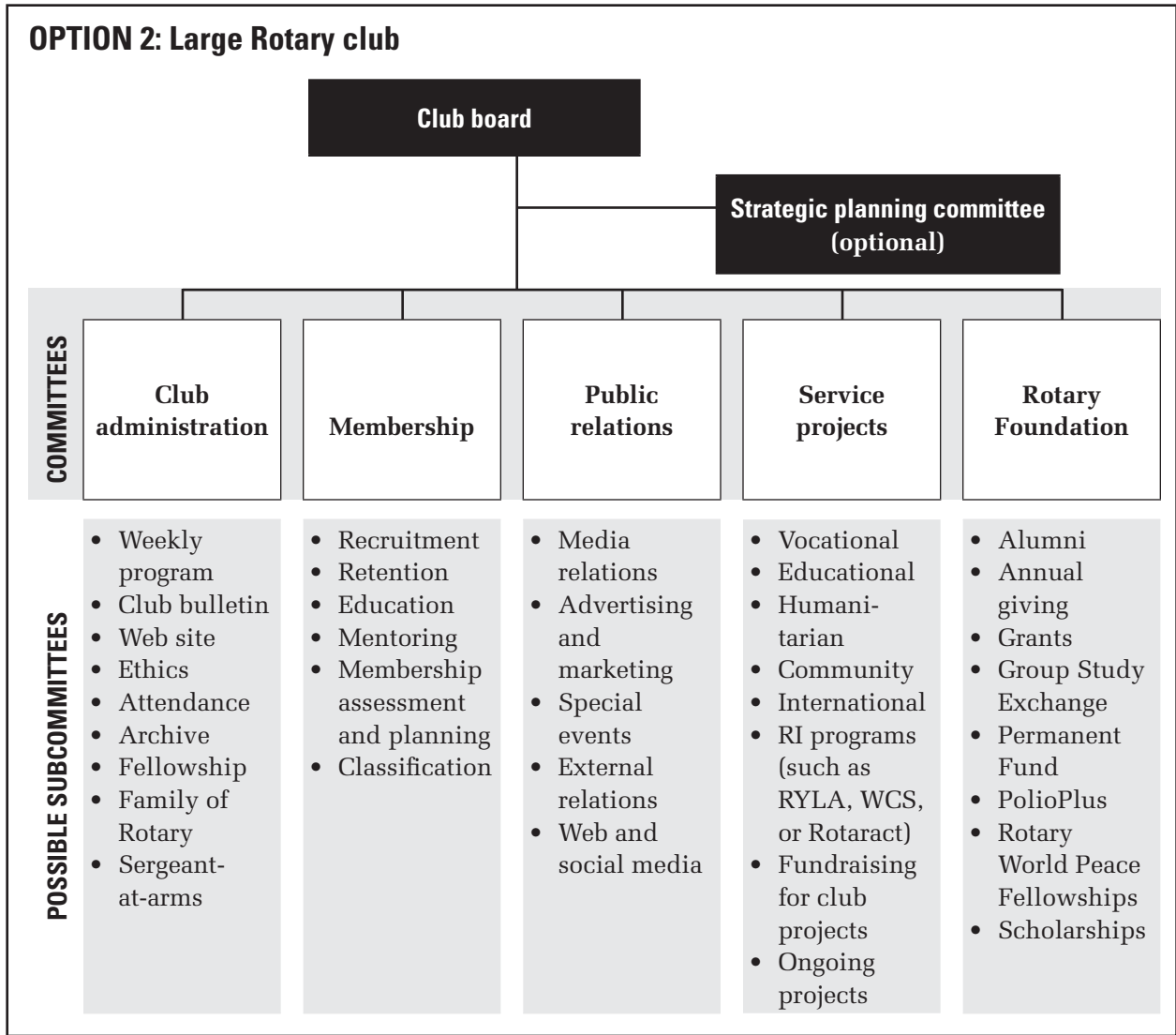
Each Rotary club's committee structure is unique as it is based on the goals and operational needs of the club itself.

Under the Club Leadership Plan, there are five recommended standing committees. Each club can add additional committees or subcommittees to meet the special interests of their club or ongoing projects. Committees and subcommittees can also be eliminated if the club does not participate in that activity.

Below are sample subcommittees for each of the standing committees depending on your club's membership size. Choose the structure that meets the needs and goals of your clubs and then add, move, and delete subcommittees as needed or develop your own committee and subcommittee structure with your fellow club leaders. If you need assistance with determining the appropriate subcommittees, contact your assistant governor or district governor.



## OPTION 2: Large Rotary club



## OPTION 3: Small Rotary Club

